

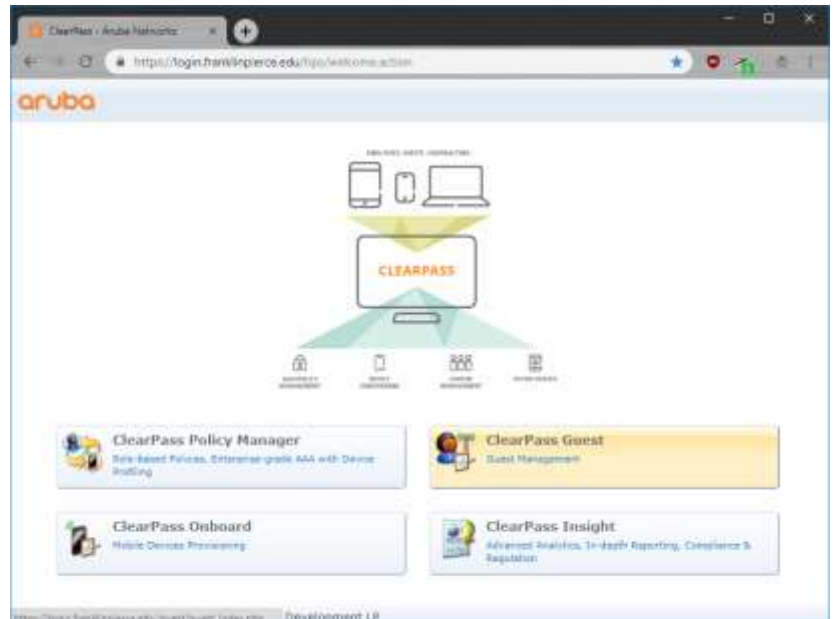
# Registering Devices for FP-Guest

**NOTE:** Attempting to use the FP-Guest network as a visitor limits users to 2 devices at time and guest accounts are limited to 3 days of access.

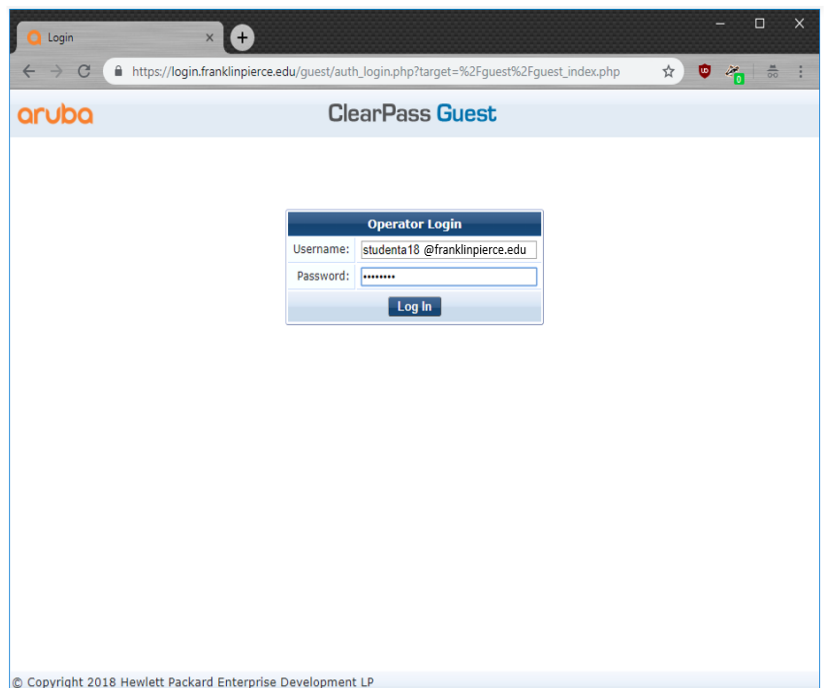
Franklin Pierce Faculty, Staff, and Students that wish to connect devices to wireless that are unable to support device certificates, such as many smart devices like Apple Watches, gaming systems, smart TVs, etc., you will need to register your device on the network. This allows you to connect more devices, as well as connect for a longer duration (300 days).

1. Open a web browser and connect to the ClearPass portal:

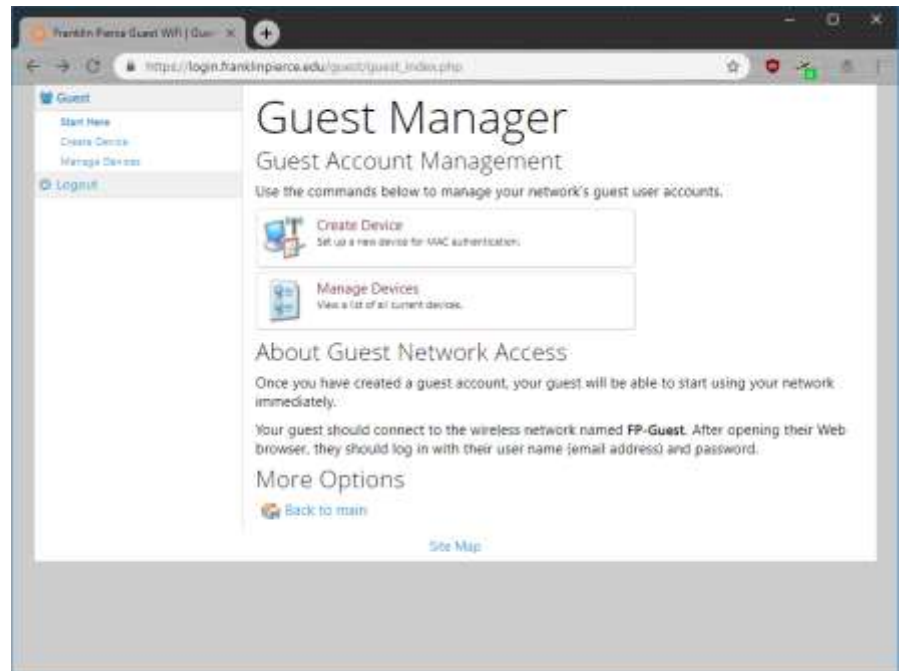
<https://login.franklinpiercedu> and choose ClearPass Guest



2. Login using your **username@franklinpiercedu** and password (student accounts - do **not** include "live.")

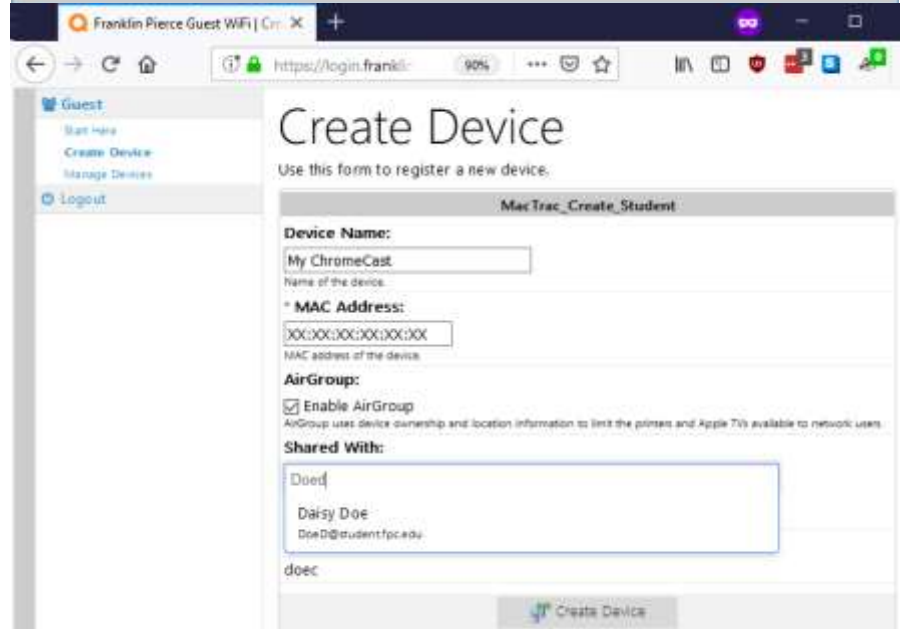


- From the Guest Manager, select the **Create Device** button



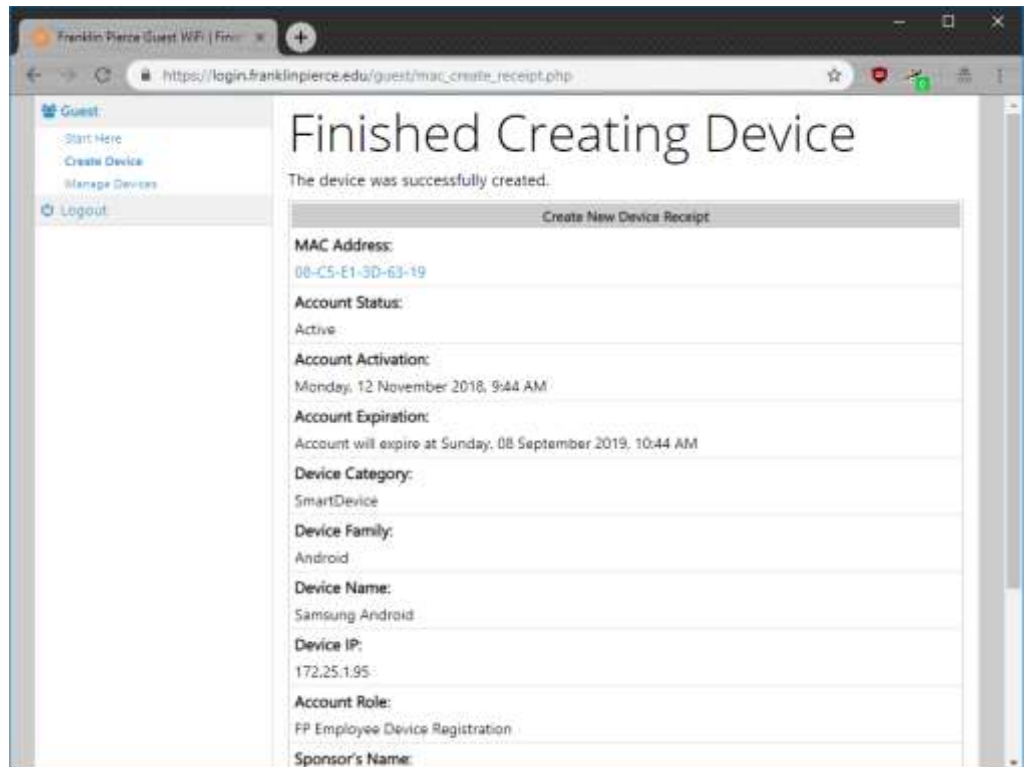
- Enter a name for your device (preferably descriptive), as well as the MAC Address for your device. We have included a list of popular devices here: [How to find your MAC address on popular devices](#).

Finding this information varies per device, but there is usually a sticker on the back of the device, or it can be found in the settings. Googling "Find Mac Address <device>" assist with providing instructions to finding your devices MAC address. It is a string of 12 alphanumeric digits, usually shown in pairs with either a colon (: ) or a hyphen (-) between them, like this 01:23:45:67:89:0A or 01-23-45-67-89-0A



NOTE: If you interact with this device with your phone, for instance a Roku or Google Chromecast, you will need to check the box to **Enable AirGroup**, or you will not be able to discover the device once on the network. Also you may choose to share usage with other people by adding them to the Shared With: field.

5. Once you have entered the required information, click the **Create Device** button and if successful, you will receive a Create New Device receipt like the one below.



6. You have now completed the registration of your device and you can now connect the device to the FP-Guest network without issue.

If your device now connects to FP-Guest network, then you can select **Logout** from the the left side menu. This registration will last about 10 months, so you will need to re-register during the next academic year.

**NOTE:** You may have to power-off and power-on the device before it would connect.